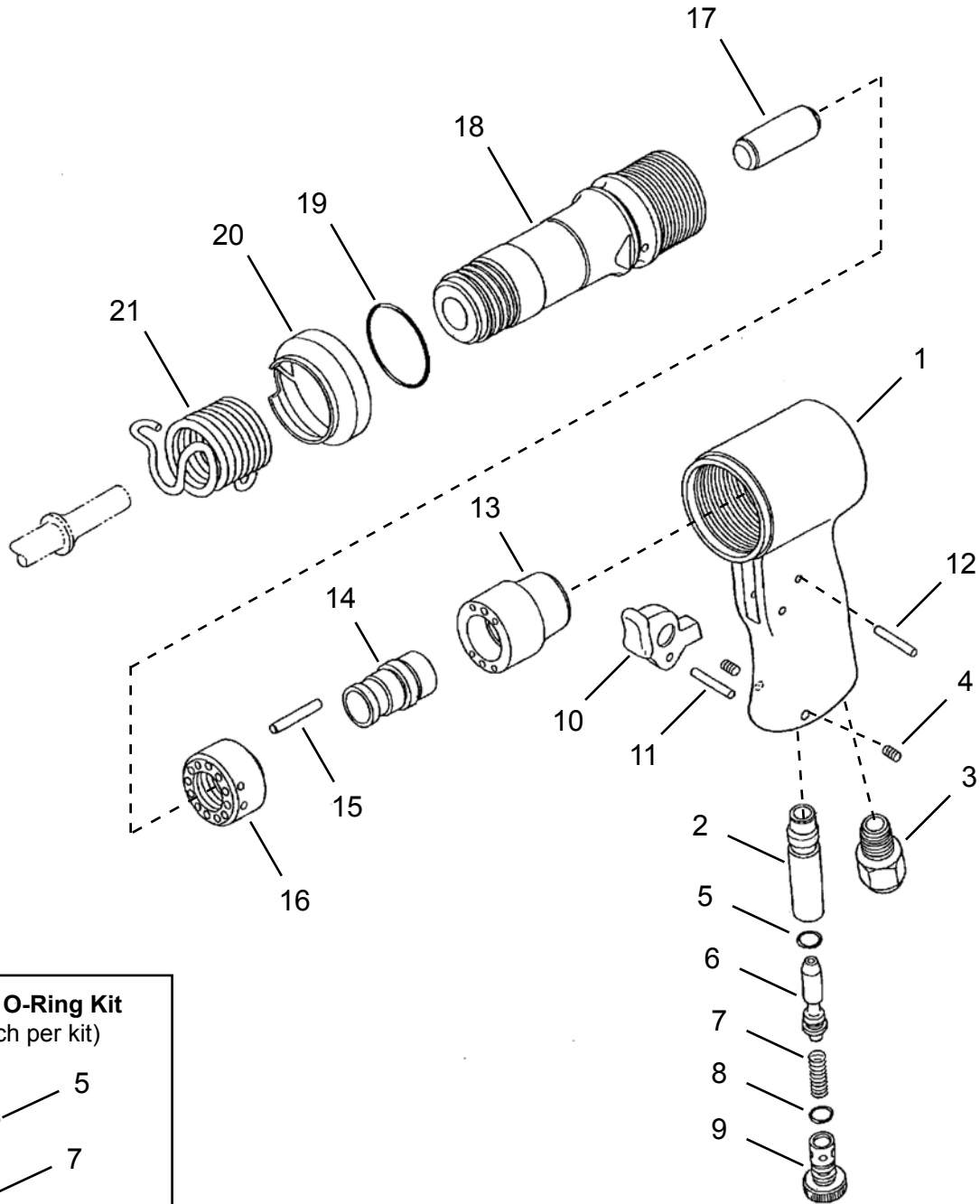


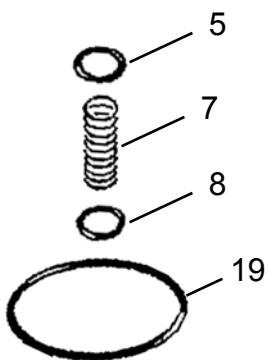


Model Number	Length		Weight		Piston Stroke		Blows per min.	Throttle Handle	Bore		For use with Rivet Set Shank Diameter		Air Inlet (NPT)
	in.	mm	lbs.	kgs	in.	mm			in.	mm	in.	mm	
F4-PT-RT-B	8.8	223	3.3	1.5	4	102	1,700	Lever	.56	14	0.401	10.2	1/4"

“A”



301140 O-Ring Kit
(4 each per kit)



Chisel Installation Procedure:

1. Remove retainer spring (#21)
2. Install chisel into bushing (#18) inside cylinder
3. Thread retainer spring (#21) onto bushing (#18)
4. For chisel removal, repeat step 1.

Illustration "A"

Ref	Number	#	X	EN
				Description
1	---	1	K1	Handle (includes Ref. 2)
2	---	1	K1	Throttle Valve Bushing
3	---	1	K1	Inlet Bushing (NPT)
4	---	2	K1	Hex Socket Head Cap Screw (M5 x 8)
* 5	---	1	K3	Throttle Valve O-Ring (S-6)
6	---	1	K3	Throttle Valve
* 7	---	1	K3	Throttle Valve Spring
* 8	---	1	K3	Control Valve O-Ring (S-8)
9	---	1	K3	Control Valve
10	---	1	K2	Lever
11	---	1	K2	Spring Pin (3 x 22)
12	---	1	K2	Spring Pin (3 x 16)
13	---	1	K4	Valve Box
14	---	1	K4	Valve
15	---	1	K4	Valve Knock Pin
16	---	1	K4	Valve Seat
17	207195	1		Piston
18	207194	1		Cylinder
19	---	1	K5	O-Ring (JASO-2035)
20	207196	1		Exhaust Band
21	207197	1		Spring Retainer
Repair Kits				
K1	301136	1		Handle Assembly Kit
K2	301137	1		Trigger Assembly Kit
K3	301138	1		Control Valve Assembly Kit
K4	301139	1		Valve Assembly Kit
K5	301140	1		O-Ring / Spring Kit

(#) Quantity

(X) Included in Repair Kit

(*) Parts also included in (K5) 301140 O-Ring/Spring Repair Kit

Sales & Service Centers

Note: All locations may not service all products. Please contact the nearest Sales & Service Center for the appropriate facility to handle your service requirements.

Dallas, TX
**Apex Tool Group
Sales & Service Center**
1470 Post & Paddock
Grand Prairie, TX 75050
Tel: 972-641-9563
Fax: 972-641-9674

Detroit, MI
**Apex Tool Group
Sales & Service Center**
2630 Superior Court
Auburn Hills, MI 48326
Tel: 248-391-3700
Fax: 248-391-7824

Houston, TX
**Apex Tool Group
Sales & Service Center**
6550 West Sam Houston
Parkway North, Suite 200
Houston, TX 77041
Tel: 713-849-2364
Fax: 713-849-2047

Lexington, SC
Apex Tool Group
670 Industrial Drive
Lexington, SC 29072
Tel: 800-845-5629
Tel: 803-359-1200
Fax: 803-358-7681

Los Angeles, CA
**Apex Tool Group
Sales & Service Center**
15503 Blackburn Avenue
Norwalk, CA 90650
Tel: 562-926-0810
Fax: 562-802-1718

Seattle, WA
**Apex Tool Group
Sales & Service Center**
2865 152nd Avenue N.E.
Redmond, WA 98052
Tel: 425-497-0476
Fax: 425-497-0496

York, PA
**Apex Tool Group
Sales & Service Center**
3990 East Market Street
York, PA 17402
Tel: 717-755-2933
Fax: 717-757-5063

Canada
**Apex Tool Group
Sales & Service Center**
5925 McLaughlin Road
Mississauga, Ont. L5R 1B8
Canada
Tel: 905-501-4785
Fax: 905-501-4786

Germany
**Cooper Power Tools
GmbH & Co. OHG**
a company of
Apex Tool Group, LLC
Postfach 30
D-73461 Westhausen
Germany
Tel: +49 (0) 73 63/ 81-0
Fax: +49 (0) 73 63/ 81-222

England
**Cooper Power Tools
GmbH & Co. OHG**
a company of
Apex Tool Group, LLC
Unit G Quinn Close
Seven Stars Industrial Estate
Whitlet
Coventry CV3 4LH
England
Tel: +44-2476-3089 60
Fax: +44-2476-3089 69

France
Cooper Power Tools SAS
a company of
Apex Tool Group, LLC
Zone Industrielle
BP 28
Avenue Maurice Chevalier
77831 Ozoir-la-Ferrière Cedex
France
Tel: (011) 33 1 64 43 22 00
Fax: (011) 33 1 64 40 17 17

China
Cooper (China) Co., Ltd.
a company of
Apex Tool Group, LLC
955 Sheng Li Road,
Heqing Pudong, Shanghai
China 201201
Tel: +86-21-28994176
Fax: +86-21-51118446

Mexico
**Cooper Tools
de México S.A. de C.V.**
a company of
Apex Tool Group, LLC
Vialidad El Pueblito #103
Parque Industrial Querétaro
Querétaro, QRO 76220
Tel: +52 (442) 211-3800
Fax: +52 (442) 103-0443

Brazil
Cooper Tools Industrial Ltda.
a company of
Apex Tool Group, LLC
Av. Liberdade, 4055
Zona Industrial - Iporanga
18087-170 Sorocaba, SP Brazil
Tel: (011) 55 15 238 3929
Fax: (011) 55 15 228 3260

Apex Tool Group, LLC
1000 Lufkin Road
Apex, NC 27539
Phone: 919-387-0099
Fax: 919-387-2614
www.apextoolgroup.com

Cleco®