



	XXX	G	L	X	X	-	XXX	-	C	XX	-	K
Tool Series												
116												
136												
Tool Type												
G = Grinder												
Throttle Type												
L = Lever												
Exhaust Type												
F = Front												
R = Rear												
S = Side												
Generation												
---- = Concept												
B = Second												
Speed Options (RPM)												
180 = 18,000												
200 = 20,000												
240 = 24,000												
250 = 25,000												
Wheel Type												
C = Collet												
Termination Codes												
3 = 3/16"												
4 = 1/4"												
5 = 5/16"												
6 = 3/8"												
6M = 6mm												
Options												
K = Kit												

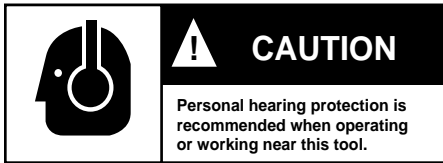
# Safety Recommendations

For your safety and the safety of others, read and understand the safety recommendations before operating any grinder.

## Always wear protective equipment and clothing.

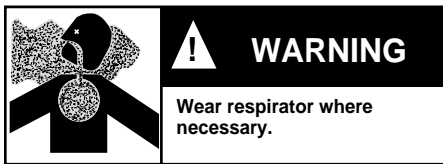


**Caution:** Faceshields do not provide unlimited protection against flying particles and are not to be considered as eye protection. ANSI Z87.1 states that separate eyewear shall be used. For additional information on eye protection, refer to Federal OSHA Regulations, 29 CFR, Section 1910.133, Eye and Face Protection, and ANSI Z87.1, Occupational and Educational Eye and Face Protection. This standard is available from the American National Standards Institute, Inc., 11 West 42nd street, New York, NY 10036.



Hearing protection is recommended in high noise areas (above 85 dBA). Close proximity of additional tools, reflective surfaces, process noises, and resonant structures can substantially contribute to the sound level experienced by the operator. Proper hearing conservation measures, including annual audiograms and training in the use and fit of hearing protection devices may be necessary. For additional information on hearing protection, refer to Federal OSHA Regulations, 29 CFR, Section 1910.95, Occupational Noise Exposure, and American National Standards Institute, ANSI S12.6, Hearing Protectors.

- **Gloves and other protective clothing should be worn as required, unless they create a greater hazard.**
- **Do not wear loose fitting clothing, or clothing that may restrict movement, become entangled or in any way interfere with the safe operation of the grinder.**



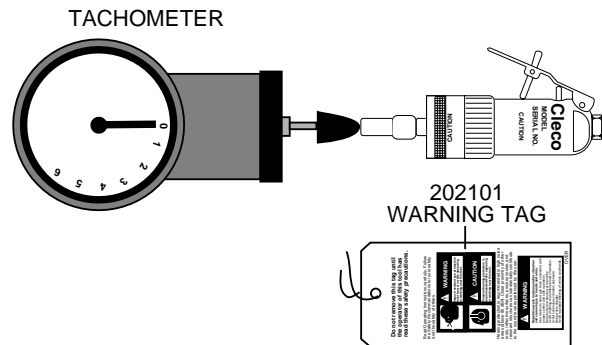
Grinding or other use of this tool may produce hazardous fumes and/or dust. To avoid adverse health effects utilize adequate ventilation and/or a respirator. Respirators should be selected, fitted, used and maintained in accordance with Occupational Safety and Health Administration and other applicable regulations. Read the material safety data sheet on any materials involved in the grinding process.

Cleco grinders are designed to operate on 90 psig (6.2 bar) max. air pressure. If the tool is properly sized and applied, higher air pressure is unnecessary. Excessive air pressure increases the

loads and stresses on the tool parts and may result in breakage. Installation of a filter-regulator-lubricator in the air supply line is highly recommended.

Before the tool is connected to air supply, check throttle for proper operation, i.e., throttle moves freely and returns to closed position. Being careful not to endanger adjacent personnel, clear air hose of accumulated dust and moisture. Use protective barriers where necessary — hot sparks can burn. Barriers also help reduce noise levels. Before removing tool from service or changing accessories, make sure air line is shut off and drained of air. This will prevent tool from operating if throttle is accidentally engaged. Do not use tool to drain residual air from air line, instead use of a self-relieving valve located near tool is highly recommended.

**The speed rating and warning information on the tool should be maintained or replaced for legibility in the event of damage.** Before installing any accessory (mounted wheels, carbide burrs, etc.), after all tool repairs, and whenever a grinder is issued for use, check the free speed of the tool with a tachometer to make sure actual free speed at 90 psig does not exceed rated free speed stamped on tool. Grinders in use on the job must be checked at least once every 20 hours of operation, or once a week, whichever is most frequent.



## INSPECT THE MOUNTED WHEEL OR CARBIDE BURR

**WARNING** Fragments from a mounted wheel or carbide burr that breaks or comes apart while rotating can cause serious injury or even death. Inspect mounted wheel or accessory. Check the maximum safe RPM marked on the accessory or package. Never use an accessory rated at or below actual tool speed. **Cracked, dropped, faulty, or bent accessories are dangerous.** Suspect accessories should not be used and should be disposed of. Look for cracks, chips, water stains, or signs of abuse or improper storage. Causes of accessory failures have been traced to such factors as:

- Dropping, bumping, or abuse (careless handling of the grinder)
- Improper mounting
- Imbalance
- Improper shipment or storage, or age
- Mismatched speed ratings
- Exposure to water, solvents, high humidity, freezing, and extreme temperatures

**Accessories known to have been subjected to any of the conditions above can burst violently and should be destroyed rather than risk their use by someone who may not notice that they are damaged.**

# Safety Recommendations

## ACCESSORY MOUNTING

The collet should be checked to assure it is in good operating condition and is secure to the tool. Accessories should be inserted to full depth of the collet. **Avoid excessive overhang that can result in vibration, or a bent spindle if excessive down force is used. Possible loss or ejection of accessory can result.**

## ⚠ WARNING

Collet equipped 116/136 grinders are intended for use with small carbide burrs and mounted wheels only. Do not use these tools for Type 1 wheel grinding. If your application calls for a Type 1 wheel, consult your Cleco representative for a wheel grinder equipped with the proper wheel guard.

## BEGINNING GRINDING OPERATION

Before using or after mounting an accessory, tool must be run for one minute in a protected enclosure to check the integrity of the accessory. During this time or any other time, no one should stand in front or in line of the accessory. When starting work with a cold wheel, apply it gradually to the workpiece until it becomes warm. **Do not continue to use a grinder if:**

- The speed rating of the accessory is less than the speed of the grinder
- It starts to vibrate
- You sense changes in tool speed or an unusual increase in noise that would indicate tool is running at excessive speed
- You notice excessive end play in spindle
- You hear any unusual sound from grinder

## RETURN THE TOOL TO THE TOOL CRIB FOR SERVICE IMMEDIATELY!

## ⚠ WARNING

**Repetitive work motions and/or vibration may cause injury to hands and arms.**

Use minimum hand grip force consistent with proper control and safe operation. Keep body and hands warm and dry. Avoid anything that inhibits blood circulation. Avoid continuous vibration exposure. Keep wrists straight. Avoid repeated bending of wrists and hands.

Some individuals may be susceptible to disorders of the hands and arms when performing tasks consisting of highly repetitive motions and/or exposure to extended vibration. Cumulative trauma disorders such as carpal

tunnel syndrome and tendonitis may be caused or aggravated by repetitious, forceful exertions of the hands and arms. Vibration may contribute to a condition called Raynaud's Syndrome. These disorders develop gradually over periods of weeks, months, and years. It is presently unknown to what extent exposure to vibrations or repetitive motions may contribute to the disorders. Hereditary factors, vasculatory or circulatory problems, exposure to cold and dampness, diet, smoking and work practices are thought to contribute to the conditions.

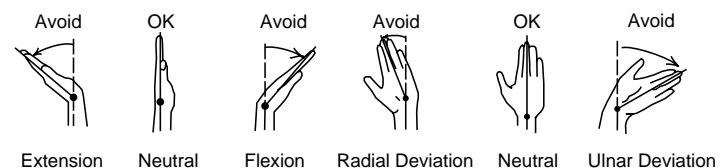
Any tool operators should be aware of the following warning signs and symptoms so that a problem can be addressed before it becomes a debilitating injury. Any user suffering prolonged symptoms of tingling, numbness, blanching of fingers, clumsiness or weakened grip, nocturnal pain in the hand, or any other disorder of

the shoulders, arms, wrists, or fingers is advised to consult a physician. If it is determined that the symptoms are job related or aggravated by movements and postures dictated by the job design, it may be necessary for the employer to take steps to prevent further occurrences. These steps might include, but are not limited to, repositioning the workpiece or redesigning the workstation, reassigning workers to other jobs, rotating jobs, changing work pace, and/or changing the type of tool used so as to minimize stress on the operator. Some tasks may require more than one type of tool to obtain the optimum operator/tool/task relationship.

The proper selection of the correct type of grinder is an important ergonomic consideration. Each application should be carefully considered and the tool chosen that will minimize the stresses on the operator that can lead to the onset of cumulative trauma disorders. Some tasks require more than one type of tool to obtain the optimum operator/tool/task relationship. Cleco has a complete selection of tools including vertical, straight, angle, and extended grinders that make possible the correct ergonomic match of the operator, tool, and task.

The following suggestions will help reduce or moderate the effects of repetitive work motions and/or extended vibration exposure:

- Use a minimum hand grip force consistent with proper control and safe operation
- Keep body and hands warm and dry (cold weather is reported to be a major factor contributing to Raynaud's Syndrome)
- Avoid anything that inhibits blood circulation
  - Smoking Tobacco (another contributing factor)
  - Cold Temperatures
  - Certain Drugs



- Tasks should be performed in such a manner that the wrists are maintained in a neutral position, which is not flexed, hyperextended, or turned side to side
- Stressful postures should be avoided — select a tool appropriate for the job and work location
- Avoid highly repetitive movements of hands and wrists, and continuous vibration exposure (after each period of operation, exercise to increase blood circulation)
- **Use quality accessories** (the primary source of vibration when using a grinder is an accessory that is out of balance, out of round, untrue, or possibly any combination of all three; avoid excessive overhang of accessory in collet)
- Use carbide burrs that are sharp, as dull burrs require more force and effort to remove material
- Keep tool well maintained and replace worn parts (a preventive maintenance program with scheduled inspections is highly recommended)

# Safety Recommendations

Work gloves with vibration reducing liners and wrist supports are available from some manufacturers of industrial work gloves. Tool wraps and grips are also available from a number of different manufacturers. These gloves, wraps, and wrist supports are designed to reduce and moderate the effects of extended vibration exposure and repetitive wrist trauma. Since they vary widely in design, material, thickness, vibration reduction, and wrist support qualities, it is recommended that the glove, tool wrap, or wrist support manufacturer be consulted for items designed for your specific application. **WARNING! Proper fit of gloves is important. Improperly fitted gloves may restrict blood flow to the fingers and can substantially reduce grip strength.**

## USE QUALITY ACCESSORIES

The primary source of vibration when using a die grinder is an accessory that is out of balance, out of round, untrue, or possibly any combination of all three.

The use of accessories which are well balanced, round, and true is highly recommended as they have been found to significantly reduce vibration. Some accessories lose their balance, roundness, and trueness as they wear from use. Because of the abusive nature of the vibration caused by out of balance, out of round, and untrue condition of some mounted wheels and carbide burrs, it is felt that these accessories are more susceptible to failure. Excessive vibration may signal eminent wheel failure. Out of balance accessories are dangerous. Flat spotting of a mounted wheel, caused by grinding the wheel to a stop after the power has been shut off can result in changes to the balance and shape of the wheel. Be sure the mounted wheel has stopped before setting the tool down. Set the tool in a tool rest or tool holder when not in use.

## WIRE BRUSHES

If a die grinder is used for wire brushing applications the same problems of balance, roundness, and trueness as experienced with mounted wheels and other accessories prevail. Use quality wire brushes.

## USE A PREVENTIVE MAINTENANCE PROGRAM

Tool abuse or poor maintenance procedures can amplify and contribute to the vibration produced by a mounted wheel or carbide burr. A preventive maintenance program featuring scheduled periodic inspections and proper maintenance is the best way to assure safety in your portable grinding operations. A well managed program can, for example, detect such things as speed variations due to wear, flanges or spindles that have been damaged from abuse, or bad bearings damaged by foreign matter or lack of lubrication. Problems such as these can affect the wheel trueness when the grinder is running and contribute to the vibration. Rotor blades that are worn or chipped can lock up the motor and damage motor components. Rotor blades should be checked periodically and replaced if they measure less than 3/16" (4.7mm) at either end. Proper repair procedures and the use of original Cleco service parts and bearings rather than substitutes will return the tool to factory specifications of precision and balance, and minimize vibration.

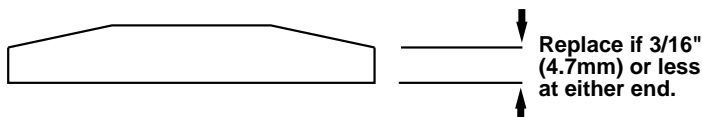
## PROPER LUBRICATION

An automatic in-line filter-regulator-lubricator is recommended as it increases tool life and keeps the tool in sustained operation. The in-line lubricator should be regularly checked and filled with a good grade of 10W machine oil. Proper adjustment of in-line lubricator is performed by placing a sheet of paper next to exhaust ports and holding throttle open approximately 30 seconds. Lubricator is properly set when a light stain of oil collects on paper. Excessive amounts of oil should be avoided.

## STORAGE

In the event it becomes necessary to store tool for an extended period of time (overnight, weekend, etc.), it should receive a generous amount of lubrication at that time and run for several seconds to distribute oil before disconnecting from air supply. This will reduce corrosion and displace water that may be trapped in tool.

This information is a compilation of general safety practices obtained from various sources available at the date of production. However, our company does not represent that every acceptable safety practice is offered herein, or that abnormal or unusual circumstances may not warrant or require additional procedures. Your work may require additional specific safety procedures. Follow these procedures as required by your company. For more information, see the latest edition of ANSI B186.1, Safety Code for Portable Air Tools, and ANSI B7.1, Safety Requirements for the Use, Care, and Protection of Abrasive Wheels, available from the American National Standards Institute, Inc., 11 West 42nd street, New York, NY 10036.



## OPERATING INSTRUCTIONS

### READ SAFETY RECOMMENDATIONS BEFORE CONNECTING TOOL.

The 116 and 136 Series Die Grinders are designed to operate on 90 psig (6.2 bar) maximum air pressure, using a 1/4" hose up to 8' in length for the 116 and a 5/16" hose for the 136. If additional length is required, the next larger hose size may be connected to the 8' whip hose.

### LUBRICATION

An automatic in-line filter-lubricator is recommended as it increases tool life and keeps the tool in sustained operation. The in-line lubricator should be regularly checked and filled with a good grade of 10W machine oil. Proper adjustment of the in-line lubricator is performed by placing a sheet of paper next to the exhaust ports and holding the throttle open approximately 30 seconds. The lubricator is properly set when a light stain of oil collects on the paper. Excessive amounts of oil should be avoided.

### STORAGE

In the event that it becomes necessary to store the tool for an extended period of time (overnight, weekend, etc.), it should receive a generous amount of lubrication at that time and again when returned to service. The tool should be stored in a clean and dry environment.

## SERVICE INSTRUCTIONS

### DISASSEMBLY

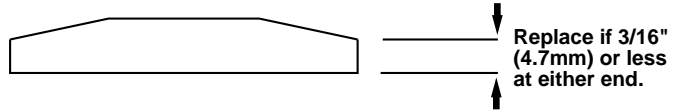
Unscrew (left hand threads) the bearing retainer and slip the motor unit out of the backhead. To remove the collet chuck, insert a 3/16" Allen wrench into the chuck to engage the rotor. Hold the Allen wrench in a vise and unscrew the collet chuck.

Use a suitable driver to drive the front rotor shaft out of the front rotor bearing. After removing the cylinder and rotor blades, the rear rotor shaft may be driven out of the rear rotor bearing.

The throttle valve may be removed by unscrewing the inlet bushing. The inlet air screen should be washed in a solvent and blown out in reverse of normal air flow. Replace the screen if damaged or torn.

### REASSEMBLY

The tool is reassembled in the reverse order of disassembly. Wash all parts in a solvent and inspect for damage or wear. It is recommended that new rotor blades be installed at each repair cycle. If not replaced, the used ones must measure a minimum of 3/16" (4.7mm) at both ends.

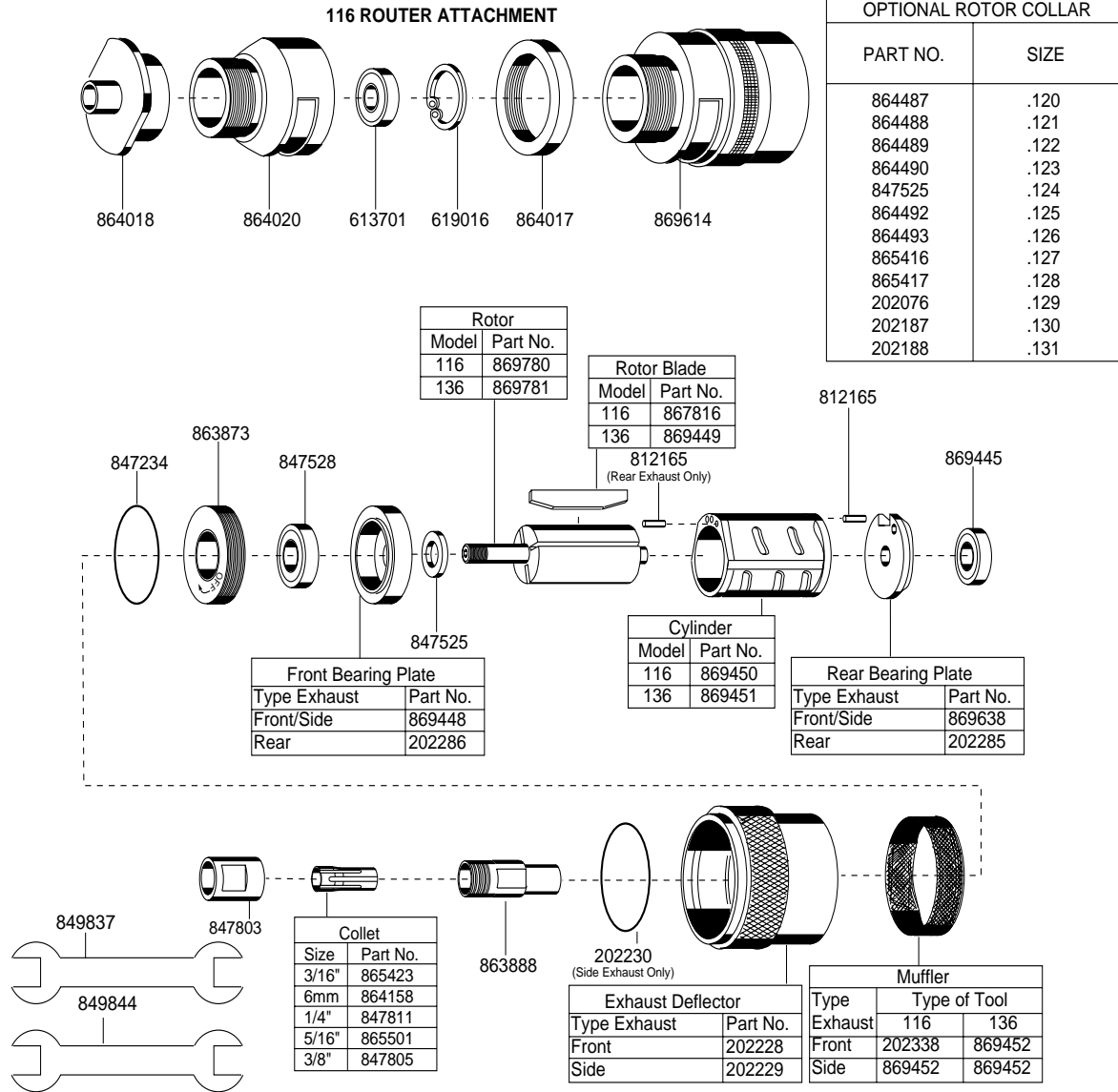


Replace bearings that are rough or have excessive end play. Install the front rotor bearing in the front bearing plate and measure the distance from the face of the bearing plate to the inner race of the bearing with the bearing race loaded rearward. Select or fit by sanding a rotor collar .001" (.025mm) to .002" (.050mm) longer than this measurement. Install the rotor blades, cylinder rear bearing plate and rear bearing on the rotor. After final assembly of the motor unit, the cylinder should be held securely but not tightly between the two plates. The rotor should not rub either plate.

When installing a motor into a rear exhaust backhead, the steel ball located in the front plate must line up with the groove in the backhead. Tighten all joints securely during reassembly. Place a few drops of 10W machine oil in the air inlet to ensure positive lubrication of all motor parts as soon as air is applied.

**CAUTION:** After the grinder is reassembled, be sure to check the free speed (R.P.M.) for proper speed with a dependable tachometer before returning the grinder to service.

# 116 & 136 DIE GRINDER MOTOR UNITS



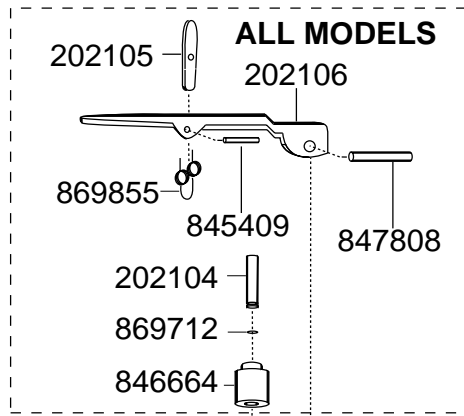
## PARTS LIST — MOTOR UNITS

Part No.	Name of Part	Qty.	Part No.	Name of Part	Qty.
202228	Front Exhaust Detlector	1	863888	Chuck Shank (Includes 847803)	1
202229	Side Exhaust Deflector	1	864017	Lock Nut	1
202230	"O"-Ring 1- 1/2" x 1- 5/8"	1	864018	Router Foot	1
202285	Rear Bearing Plate	1	864020	Sleeve	1
202286	Front Bearing Plate	1	864158	6mm Collet (Opt.)	1
202338	Muffler	1	865423	3/16" Collet (Opt )	1
613701	Ball Bearing	1	865501	5/16" Collet (Opt.)	1
619016	Retainer Ring	1	867816	Rotor Blade	4
812165	Cylinder Pin	2	869445	Rear Rotor Bearing	1
847234	"O"-Ring 1-1/8" x 1-1/4"	1	869448	Front Bearing Plate	1
847525	Rotor Collar .124"	1	869449	Rotor Blade	4
847528	Front Rotor Bearing	1	869450	Cylinder (Includes Rear Cyl. Pin)	1
847803	Chuck Lock Nut	1	869451	Cylinder (Includes Rear Cyl. Pin)	1
847805	3/8" Collet (Opt.)	1	869452	Muffler	1
847811	1/4" Collet (Std.)	1	869614	Router Body	1
849837	9/16" x 11/16" Wrench (136G Requires One (1) Only)	2	869638	Rear Bearing Plate	1
849844	5/8" x 3/4" Wrench	1	869780	Rotor	1
863873	Front Bearing Retainer	1	869781	Rotor	1

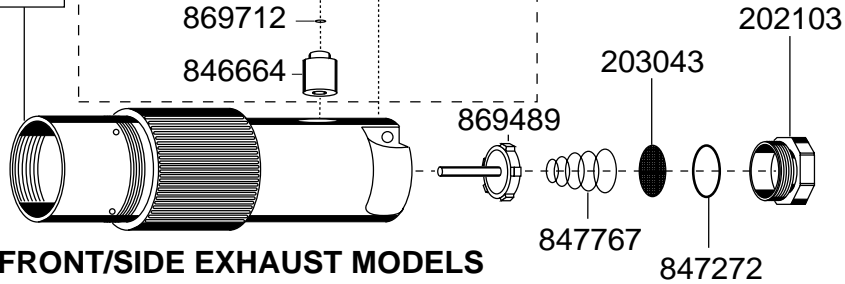
The router attachment can be purchased as a subassembly using Part No. 861804.

# 116 & 136 DIE GRINDER HANDLES

Front/Side Exhaust Backhead	
Model No.	Part No.
116G-250	202107
136G-180	202109
136G-240	202110



## FRONT/SIDE EXHAUST MODELS



Tool RPM	Part No.
15,000	202289
18,000	
20,000	869845
25,000	



## REAR EXHAUST MODEL

Rear Exhaust Backhead		
Type Grinder	RPM	Part No.
Collet	15,000	202711
Collet	18,000	202222
Collet	20,000	202215
Collet	25,000	202221

## PARTS LIST — HANDLES

Part No.	Name of Part	Qty.	Part No.	Name of Part	Qty.
202103	Inlet Bushing	1	833188	Throttle Valve Spring	1
202104	Throttle Valve Pin (incl. 869712)	1	833300	Inlet Screen	1
202105	Toggle	1	844309	"O"-Ring 7/16"x 5/8"	1
202106	Lock-Off Lever	1	845409	Toggle Pin	1
202107	Backhead (incl. 846664)	1	846664	Throttle Pin Bushing	1
202109	Backhead (incl. 846664)	1	847272	"O"-Ring 5/8"x 3/4"	1
202110	Backhead (incl. 846664)	1	847767	Throttle Valve Spring	1
202215	Backhead (incl. 846664)	1	847808	Throttle Lever Pin	1
202221	Backhead (incl. 846664)	1	863454	"O"-Ring 9/16"x 11/16"	1
202222	Backhead (incl. 846664)	1	863880	"O"-Ring 1-1/4 x 1-3/8	1
202287	Inlet Bushing (incl. 833300)	1	869489	Throttle Valve	1
202288	Throttle Valve	1	869712	"O"-Ring 5/64"x 13/64"	1
202289	Throttle Valve Seat	1	869844	Exhaust Deflector	1
202711	Backhead (incl. 846664)	1	869845	Throttle Valve Seat	1
203043	Inlet Screen	1	869850	Muffler Felt	2
			869855	Toggle Spring	1

## COMPLETE HANDLE SUBASSEMBLIES

Model No.	Type Tool	RPM	Part No.
116GL-250	Collet	25,000	861991
136GL-180	Collet	18,000	861994
136GL-240	Collet	24,000	861995
136GLR-150	Collet	15,000	201178
136GLR-180	Collet	18,000	861132
136GLR-200	Collet	20,000	861137
136GLR-250	Collet	25,000	861131

The lock-off lever can be purchased as a subassembly using Part No. 861992.

## Sales & Service Centers

**Note:** All locations may not service all products. Please contact the nearest Sales & Service Center for the appropriate facility to handle your service requirements.

Dallas, TX  
**Apex Tool Group  
Sales & Service Center**  
1470 Post & Paddock  
Grand Prairie, TX 75050  
Tel: 972-641-9563  
Fax: 972-641-9674

Detroit, MI  
**Apex Tool Group  
Sales & Service Center**  
2630 Superior Court  
Auburn Hills, MI 48326  
Tel: 248-391-3700  
Fax: 248-391-7824

Houston, TX  
**Apex Tool Group  
Sales & Service Center**  
6550 West Sam Houston  
Parkway North, Suite 200  
Houston, TX 77041  
Tel: 713-849-2364  
Fax: 713-849-2047

Lexington, SC  
**Apex Tool Group**  
670 Industrial Drive  
Lexington, SC 29072  
Tel: 800-845-5629  
Tel: 803-951-7544  
Fax: 803-358-7681

Los Angeles, CA  
**Apex Tool Group  
Sales & Service Center**  
15503 Blackburn Avenue  
Norwalk, CA 90650  
Tel: 562-623-4457  
Fax: 562-802-1718

Seattle, WA  
**Apex Tool Group  
Sales & Service Center**  
2865 152nd Avenue N.E.  
Redmond, WA 98052  
Tel: 425-497-0476  
Fax: 425-497-0496

York, PA  
**Apex Tool Group  
Sales & Service Center**  
3990 East Market Street  
York, PA 17402  
Tel: 717-755-2933  
Fax: 717-757-5063

Canada  
**Apex Tool Group  
Sales & Service Center**  
5925 McLaughlin Road  
Mississauga, Ont. L5R 1B8  
Canada  
Tel: 905-501-4785  
Fax: 905-501-4786

Germany  
Cooper Power Tools  
GmbH & Co. OHG  
a company of  
Apex Tool Group, LLC  
Industriestraße 1  
73463 Westhausen  
Germany  
Tel: +49 (0) 73 63 81 0  
Fax: +49 (0) 73 63 81 222

England  
Cooper Power Tools  
GmbH & Co. OHG  
a company of  
Apex Tool Group, LLC  
C/O Spline Gauges  
Piccadilly, Tamworth  
Staffordshire B78 2ER  
United Kingdom  
Tel: +44 1827 8741 28  
Fax: +44 1827 8741 28

France  
Cooper Power Tools SAS  
a company of  
Apex Tool Group, LLC  
25 rue Maurice Chevalier  
77330 Ozoir-La-Ferrière  
France  
Tel: +33 1 6443 2200  
Fax: +33 1 6443 1717

China  
Cooper (China) Co., Ltd.  
a company of  
Apex Tool Group, LLC  
955 Sheng Li Road,  
Heqing Pudong, Shanghai  
China 201201  
Tel: +86-21-28994176  
Fax: +86-21-51118446

Mexico  
Cooper Tools  
de México S.A. de C.V.  
a company of  
Apex Tool Group, LLC  
Vialidad El Pueblito #103  
Parque Industrial Querétaro  
Querétaro, QRO 76220  
Mexico  
Tel: +52 (442) 211-3800  
Fax: +52 (442) 103-0443

Brazil  
Cooper Tools Industrial Ltda.  
a company of  
Apex Tool Group, LLC  
Av. Liberdade, 4055  
Zona Industrial - Iporanga  
SP Brazil  
Tel: +55 15 2383929  
Fax: +55 15 2383260

Hungary  
Cooper Tools Hungaria Kft.  
a company of  
Apex Tool Group, LLC  
Berkenyefa sor 7  
Pf: 640  
9027 Győr  
Hungary  
Tel: +36 96 66 1383  
Fax: +36 96 66 1135

Apex Tool Group, LLC  
1000 Lufkin Road  
Apex, NC 27539  
Phone: 919-387-0099  
Fax: 919-387-2614  
www.apextoolgroup.com

# Cleco®