



Throttle Type	Cycles per Minute	Terminations	
		300 Collet	Threaded Spindle *
	14,000		
Locking Lever	12L2240	-36	-90
Locking Lever	12S2240	-36	-90

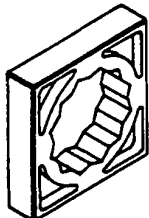
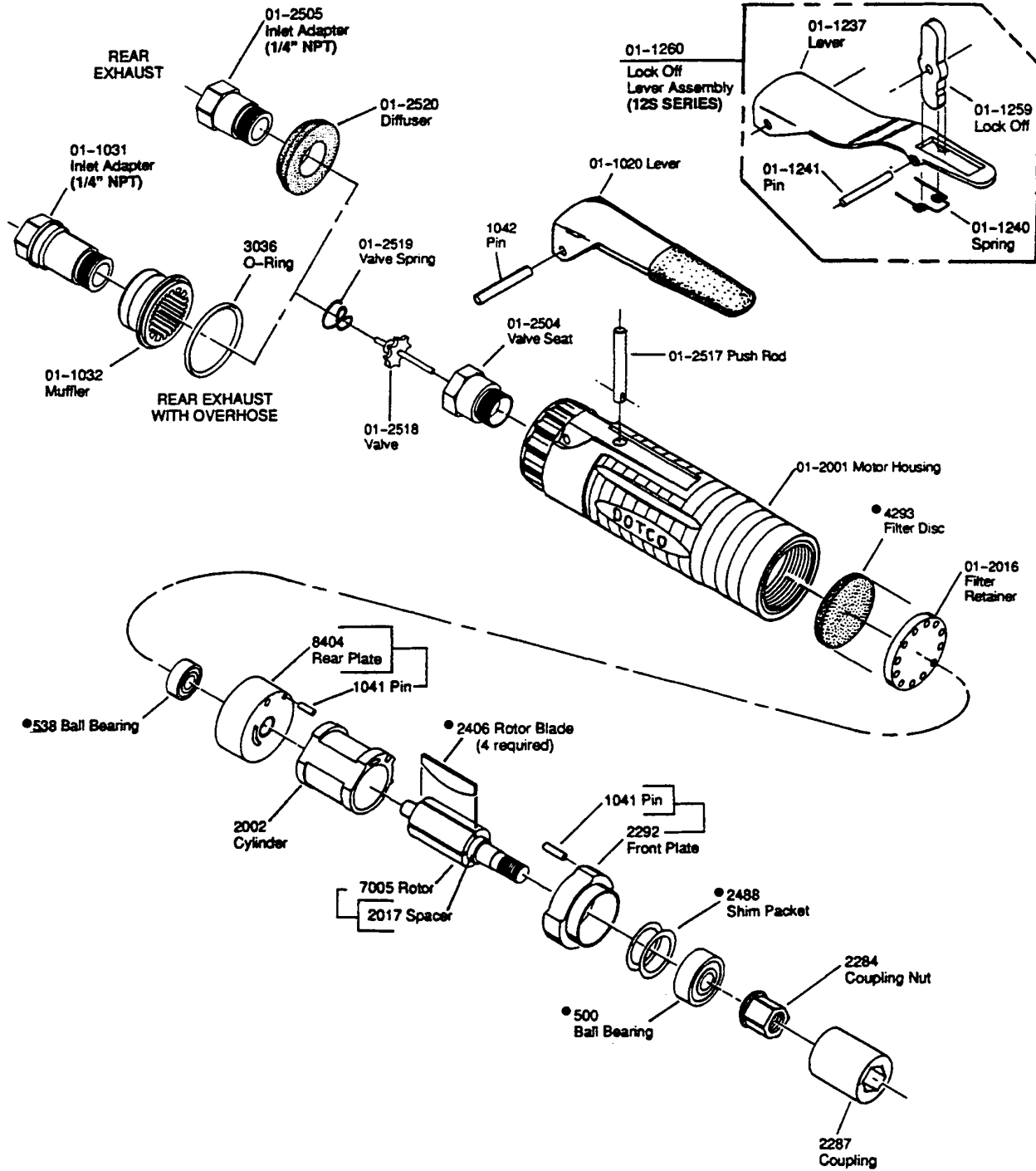
* Note: 3/8" Arbor Hole Saw Blade (max. Saw Blade dia. = 2-1/2")

3/8" Arbor Hole Saw Blades				
Part Number	Diameter	Type	Maximum Depth & Width of Cut	Recommended Use
14-1740	2"	Carbide Chip * 36/80 Grit	7/16" x 3/32"	Fiberglass
14-1741	2"	Diamond Chip* 40/60 Grit	7/16" x 5/64"	Fiberglass, Carbon Composites
14-1742	2-1/2"	Stainless Chip, 124 Teeth	9/16" x 3/64"	Wood, Uncured or Cured Composites, Aluminum, Plastic
14-1746	2-1/2"	Flush Stainless, 124 Teeth	9/16" x 3/64"	Wood, Uncured or Cured Composites, Aluminum, Plastic
14-1743	2-1/2"	Carbide** 80 Teeth	9/16" x 1/16"	Cured Graphite Composites
14-1744	2-1/2"	Razor	9/16" x 3/64"	Cardboard, Light Plastic

* Note: CAUTION: Use only for sawing non-metallic materials.

** Note: Specifications subject to change

DOTCO 12-22 Series ERGO Right Angle Oscillating Saws Motor & Motor Housing Assemblies



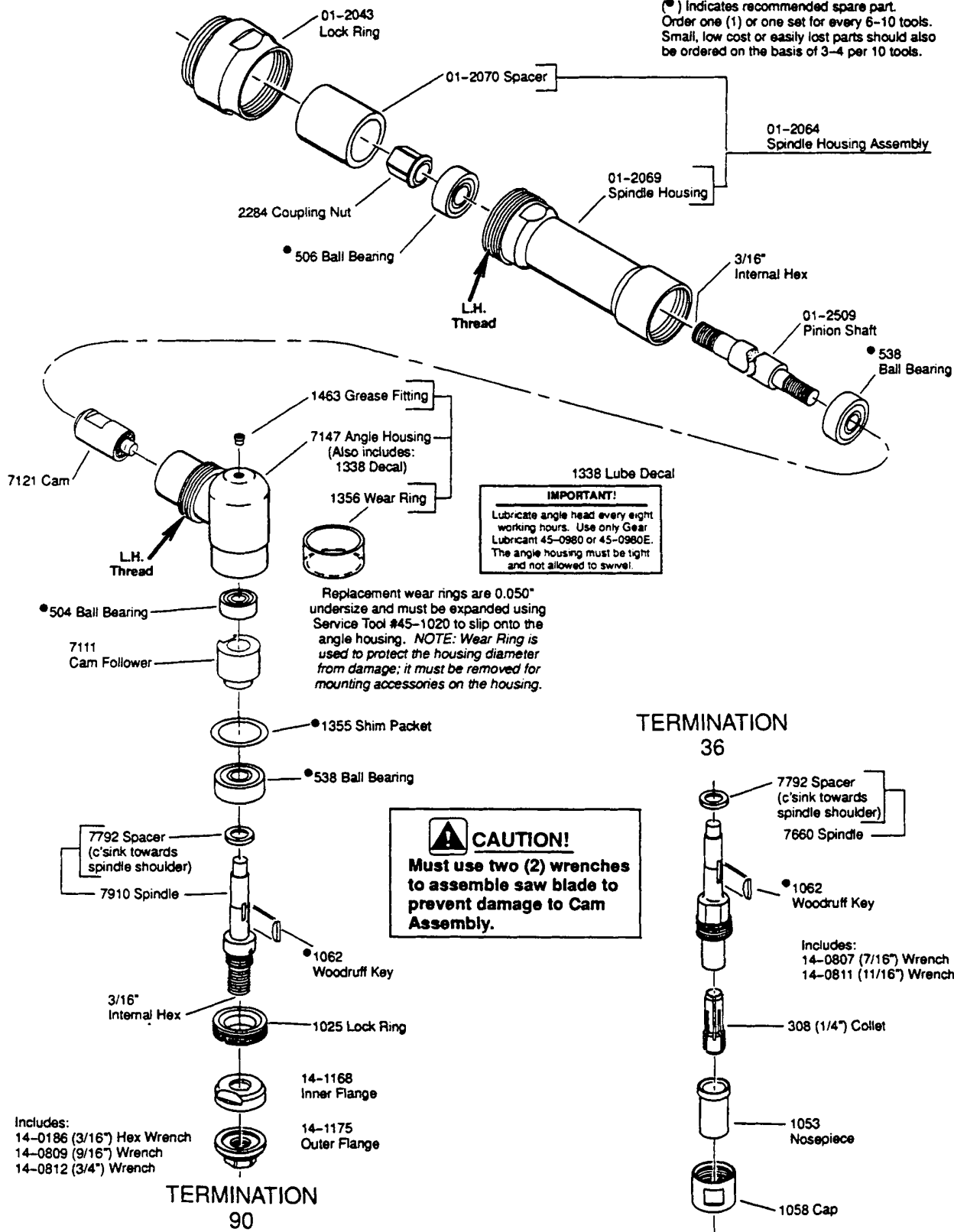
14-0851
Housing Wrench, or use
1-3/8" (12 pt.) Socket

(*) Indicates recommended spare part.
Order one (1) or one set for every 6-10 tools.
Small, low cost or easily lost parts should also
be ordered on the basis of 3-4 per 10 tools.

DOTCO

12-22 Series ERGO Right Angle Oscillating Saws Angle Head Assemblies

(*) Indicates recommended spare part.
Order one (1) or one set for every 6-10 tools.
Small, low cost or easily lost parts should also
be ordered on the basis of 3-4 per 10 tools.



Sales & Service Centers

Note: All locations may not service all products. Please contact the nearest Sales & Service Center for the appropriate facility to handle your service requirements.

Dallas, TX
**Apex Tool Group
Sales & Service Center**
1470 Post & Paddock
Grand Prairie, TX 75050
Tel: 972-641-9563
Fax: 972-641-9674

Detroit, MI
**Apex Tool Group
Sales & Service Center**
2630 Superior Court
Auburn Hills, MI 48326
Tel: 248-391-3700
Fax: 248-391-7824

Houston, TX
**Apex Tool Group
Sales & Service Center**
6550 West Sam Houston
Parkway North, Suite 200
Houston, TX 77041
Tel: 713-849-2364
Fax: 713-849-2047

Lexington, SC
Apex Tool Group
670 Industrial Drive
Lexington, SC 29072
Tel: 800-845-5629
Tel: 803-951-7544
Fax: 803-358-7681

Los Angeles, CA
**Apex Tool Group
Sales & Service Center**
15503 Blackburn Avenue
Norwalk, CA 90650
Tel: 562-623-4457
Fax: 562-802-1718

Seattle, WA
**Apex Tool Group
Sales & Service Center**
2865 152nd Avenue N.E.
Redmond, WA 98052
Tel: 425-497-0476
Fax: 425-497-0496

York, PA
**Apex Tool Group
Sales & Service Center**
3990 East Market Street
York, PA 17402
Tel: 717-755-2933
Fax: 717-757-5063

Canada
**Apex Tool Group
Sales & Service Center**
5925 McLaughlin Road
Mississauga, Ont. L5R 1B8
Canada
Tel: 905-501-4785
Fax: 905-501-4786

Germany
Cooper Power Tools
GmbH & Co. OHG
a company of
Apex Tool Group, LLC
Industriestraße 1
73463 Westhausen
Germany
Tel: +49 (0) 73 63 81 0
Fax: +49 (0) 73 63 81 222

England
Cooper Power Tools
GmbH & Co. OHG
a company of
Apex Tool Group, LLC
C/O Spline Gauges
Piccadilly, Tamworth
Staffordshire B78 2ER
United Kingdom
Tel: +44 1827 8741 28
Fax: +44 1827 8741 28

France
Cooper Power Tools SAS
a company of
Apex Tool Group, LLC
25 rue Maurice Chevalier
77330 Ozoir-La-Ferrière
France
Tel: +33 1 6443 2200
Fax: +33 1 6443 1717

China
Cooper (China) Co., Ltd.
a company of
Apex Tool Group, LLC
955 Sheng Li Road,
Heqing Pudong, Shanghai
China 201201
Tel: +86-21-28994176
Fax: +86-21-51118446

Mexico
Cooper Tools
de México S.A. de C.V.
a company of
Apex Tool Group, LLC
Vialidad El Pueblito #103
Parque Industrial Querétaro
Querétaro, QRO 76220
Mexico
Tel: +52 (442) 211-3800
Fax: +52 (442) 103-0443

Brazil
Cooper Tools Industrial Ltda.
a company of
Apex Tool Group, LLC
Av. Liberdade, 4055
Zona Industrial - Iporanga
SP Brazil
Tel: +55 15 2383929
Fax: +55 15 2383260

Hungary
Cooper Tools Hungaria Kft.
a company of
Apex Tool Group, LLC
Berkenyefa sor 7
Pf: 640
9027 Győr
Hungary
Tel: +36 96 66 1383
Fax: +36 96 66 1135

Apex Tool Group, LLC
1000 Lufkin Road
Apex, NC 27539
Phone: 919-387-0099
Fax: 919-387-2614
www.apextoolgroup.com

DOTCO®