

**Parts Manual**

**45-8014**

PL30-1025

04/21/2011

**DOTCO®**

**10-25 Series  
Heavy Duty Grinders**



Throttle Type	Free Speed (RPM)			Terminations			
	23,000	18,000	23,000	200 Collet	300 Collet	Cone & Plug	Type 1
Button	10B2500	10B2502	10B2507	-01	-36	-77	-13, -16, -17
Lock-Off Lever	10K2500	10K2502	10K2507	-01	-36	-77	-13, -16, -17
Locking Lever	10L2500	10L2502	10L2507	-01	-36	-77	-13, -16, -17
Locking Lever	10S2500	10S2502	10S2507	-01	-36	-77	-13, -16, -17

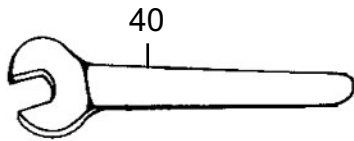
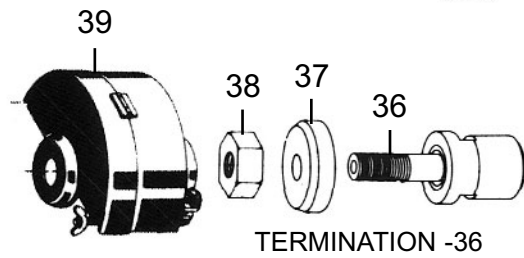
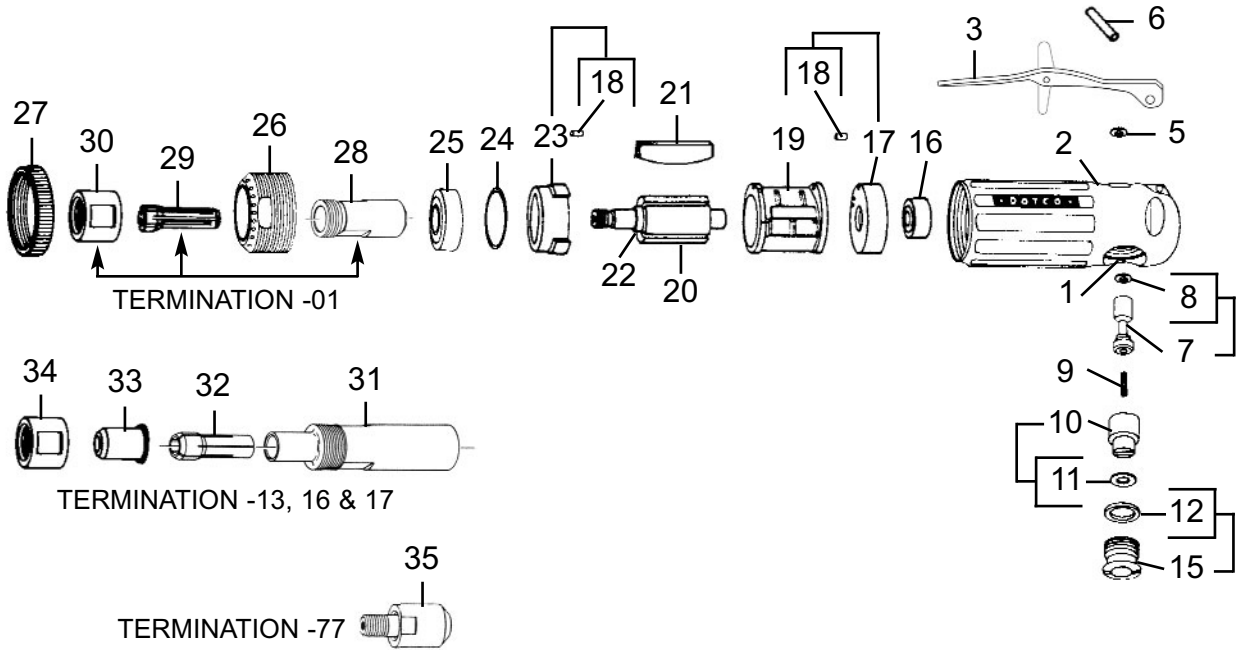
For additional product information visit our website at <http://www.apextoolgroup.com>

# DOTCO

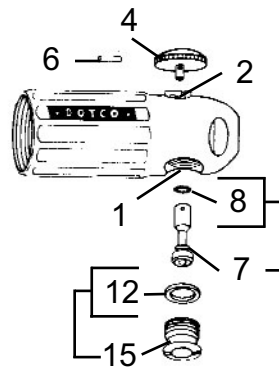
## 10-25 Series Ultra Heavy Duty Grinders

**"A"**

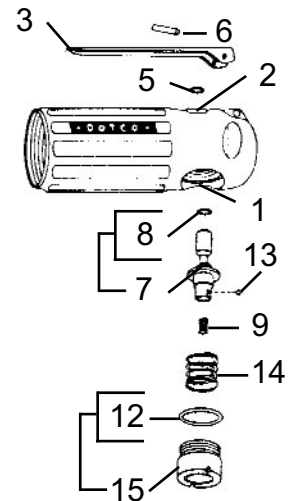
### "L" & "S" LATCHING LEVER THROTTLE



### BUTTON THROTTLE



### "K" LOCK-OFF LEVER THROTTLE



# DOTCO

## 10-25 Series Ultra Heavy Duty Grinders

PL30-1025  
August 10, 2006

**Illustration "A" - Motor Assembly**

Ref.	Number	#	●	Kit	EN	DE	FR	ES	IT
					Description	Benennung	Description	Descripción	Descrizione
1	Table A	1			Motor Housing	Motorgehäuse	Cage de moteur	Caja del motor	Corpo motore
2	Table A	1			* Valve Bushing	Lagerbuchse	Douille	Casquillo	Boccola
3	Table A	1			Lever	Hebel	Levier	Palanca	Leva
4	1039	1			Button	Drucktaste	Bouton	Botón	Pulsante
5	Table A	1			O-Ring	O-Ring	Joint torique	Anillo "O"	Anello ad O
6	Table A	1			Pin	Stift	Goupille cylindrique	Pasador	Spina
7	Table A	1			Valve Stem	Ventilschaft	Tige de soupape	Vástago de válvula	Asta valvola
8	2053	1			O-Ring	O-Ring	Joint torique	Anillo "O"	Anello ad O
9	2015	1			Valve Spring	Ventilfeder	Printemps de soupape	La Primavera de la válvula	Primavera di valvola
10	2011	1			Speed Regulator	Regler	Régulateur	Regulador	Regolatore
11	1056	1			O-Ring	O-Ring	Joint torique	Anillo "O"	Anello ad O
12	1057	1			O-Ring	O-Ring	Joint torique	Anillo "O"	Anello ad O
13	4180	2			Ball	Kugel	Bille	Bolas	Sfera
14	2413	1			Spring	Druckfeder	Ressort	Resorte	Molla
15	Table A	1			Plug Assembly	Montage	Assemblage	Ensamblaje	Assemblaggio
16	538	1			Ball Bearing	Kugellager	Roulement à billes	Cojinete de bolas	Cuscinetto a sfera
17	7003	1			Bearing Plate	Tragplatte	Plaque de support	Placa de asiento	Piattello cuscinetto
18	1041	2			Locating Pin	Stift	Goupille cylindrique	Pasador	Spina
19	2255	1			Cylinder	Zylinder	Cylindre	Cilindro	Cilindro
20	Table A1	1			Rotor	Rotor	Rotor	El rotor	Il rotore
21	Table A1	4			Rotor Blade	Rotorblatt	Palette	Alabe del rotor	Paletta del rotore
22	2017	1			Spacer	Distanzstück	Entretoise	Espaciador	Distanziale
23	2256	1			Bearing Plate	Tragplatte	Plaque de support	Placa de asiento	Piattello cuscinetto
24	2488	1			Shim Packet	Unterlegstück	Cale pelable	Calzo	Spessore
25	500	1			Ball Bearing	Kugellager	Roulement à billes	Cojinete de bolas	Cuscinetto a sfera
26	Table A1	1			Lock Ring	Verschlussring	Bague de verrouillage	Anillo de cierre	Anello di bloccaggio
27	2585	1			Guard	Schutzvorrichtung	Protection	Guarda	Protezione
<b>Termination 01:</b>									
28	2054	1			Collet Chuck Body	Futtergehäuse	Corps de douille de serrage	Cuerpo de la boquilla	Corpo bussola di chiusura
29	Table A2	1			Collet (200 series)	Futter	Douille de serrage	Boquilla	Bussola di chiusura
30	2058	1			Collet Chuck Cap	Futter	Douille de serrage	Boquilla	Bussola di chiusura
<b>Termination 36:</b>									
31	1400	1			Collet Chuck Body	Futter	Douille de serrage	Boquilla	Bussola di chiusura
32	Table A2	1			Collet (300 series)	Futter	Douille de serrage	Boquilla	Bussola di chiusura
33	1053	1			Nosepiece	Kopfstück	Tuyère	Tobera	Naso
34	1058	1			Collet Chuck Cap	Kappe	Chapeau	Tapa	Cappello
<b>Termination 77:</b>									
35	7525	1			Arbor	Dorn	axe	cenador	supporto conico
<b>Termination 13:</b>									
36	7649	1			Adapter	Zwischenstück	Adaptateur	Adaptador	Adattatore
37	7653	1			Flange	Flansch	Rebord	Pestaña	Flangia
38	1573	1			Nut	Mutter	Ecrou	Tuerca	Dado
39	14-2559	1			Guard (2")	Schutzvorrichtung	Protection	Guarda	Protezione
<b>Termination 16:</b>									
36	7577	1			Adapter	Zwischenstück	Adaptateur	Adaptador	Adattatore
37	14-3052	1			Flange	Flansch	Rebord	Pestaña	Flangia
38	2057	1			Nut	Mutter	Ecrou	Tuerca	Dado
39	14-2551	1			Guard (3")	Schutzvorrichtung	Protection	Guarda	Protezione

## DOTCO

### 10-25 Series Ultra Heavy Duty Grinders

#### Continued Illustration "A" - Motor Assembly

Ref.	Number	#	•	Kit	EN	DE	FR	ES	IT
					Description	Benennung	Description	Descripción	Descrizione
<b>Termination 17:</b>									
36	7531	1			Adapter	Zwischenstück	Adaptateur	Adaptador	Adattatore
37	14-3056	1			Flange	Flansch	Rebord	Pestaña	Flangia
38	14-4073	1			Nut	Mutter	Ecrou	Tuerca	Dado
39	14-2551	1			Guard (3")	Schutzvorrichtung	Protection	Guarda	Protezione
<b>Wrenches:</b>									
40	14-0807	1			Wrench (7/16") -13,-36	Schraubenschlüssel	Clé plate	La llave	La chiave
	14-0808	1			Wrench (1/2") -77	Schraubenschlüssel	Clé plate	La llave	La chiave
	14-0809	1			Wrench (9/16") -01,-16	Schraubenschlüssel	Clé plate	La llave	La chiave
	14-0810	1			Wrench (5/8") -13	Schraubenschlüssel	Clé plate	La llave	La chiave
	14-0811	1			Wrench (11/16") -36	Schraubenschlüssel	Clé plate	La llave	La chiave
	14-0812	1			Wrench (3/4") -01	Schraubenschlüssel	Clé plate	La llave	La chiave
	14-0814	1			Wrench (7/8") -16,-17	Schraubenschlüssel	Clé plate	La llave	La chiave

(#) Quantity / Stückzahl / Quantité / Cantidad / Quantità

- Note: If necessary to replace valve bushing, press bushing, beveled end first, into threaded end of crosshole of motor housing. The valve bushing base should be .785" plus .005" from counterbored shoulder of crosshole. Hone inside diameter of valve bushing to .3129" plus .0003" diameter.

Table "A"

Ref.	Description	Qty.	10B2500 10B2502	Qty.	10K2500 10K2502	Qty.	10K2507	Qty.	10(L)(S)2500 10(L)(S)2502	Qty.	10(L)(S)2507
1	Motor Housing	1	2274	1	2260	1	2874	1	2260	1	2874
2	Valve Bushing	1	2037	1	2007	1	7507	1	2007	1	7507
3	Lever		---	1	1019	1	1019	1	01-1267	1	01-1267
5	O-Ring		---		---	1	1056		---	1	1056
6	Pin	1	1055	1	1042	1	1042	1	1042	1	1042
7	Valve Stem	1	2038	1	2412	1	2412	1	2008	1	2008
15	Plug Assembly	1	2012	1	2411	1	2411	1	2012	1	2012

Table "A1"

Ref.	Description	Qty.	10B2500 10K2500 10L2500 10S2500	Qty.	10B2502 10K2502 10L2502 10S2502	Qty.	10K2507 10L2507 10S2507
20	Rotor	1	7654	1	7654	1	7657
21	Rotor Blade	4	2253	4	2906	4	2253
26	Lock Ring	1	2014	1	2085	1	2014

Table "A2"

200 Series Optional Collets					
Part No.	Arbor Size	Part No.	Arbor Size	Part No.	Arbor Size
204	1/8"	208 *	1/4"	212	3/8"
205	5/32"	209	9/32"	213	6mm
206	3/16"	210	5/16"	216	8mm
207	7/32"	211	11/32"		
300 Series Optional Collets					
Part No.	Arbor Size	Part No.	Arbor Size	Part No.	Arbor Size
301	3/64"	305	5/32"	310	6mm
302	5/64"	306	3/16"		
303	3/32"	307	7/32"		
304	1/8"	308 *	1/4"		

\* Standard Collet







## Sales & Service Centers

**Note:** All locations may not service all products. Please contact the nearest Sales & Service Center for the appropriate facility to handle your service requirements.

Dallas, TX  
**Apex Tool Group  
Sales & Service Center**  
1470 Post & Paddock  
Grand Prairie, TX 75050  
Tel: 972-641-9563  
Fax: 972-641-9674

Detroit, MI  
**Apex Tool Group  
Sales & Service Center**  
2630 Superior Court  
Auburn Hills, MI 48326  
Tel: 248-391-3700  
Fax: 248-391-7824

Houston, TX  
**Apex Tool Group  
Sales & Service Center**  
6550 West Sam Houston  
Parkway North, Suite 200  
Houston, TX 77041  
Tel: 713-849-2364  
Fax: 713-849-2047

Lexington, SC  
**Apex Tool Group**  
670 Industrial Drive  
Lexington, SC 29072  
Tel: 800-845-5629  
Tel: 803-951-7544  
Fax: 803-358-7681

Los Angeles, CA  
**Apex Tool Group  
Sales & Service Center**  
15503 Blackburn Avenue  
Norwalk, CA 90650  
Tel: 562-623-4457  
Fax: 562-802-1718

Seattle, WA  
**Apex Tool Group  
Sales & Service Center**  
2865 152nd Avenue N.E.  
Redmond, WA 98052  
Tel: 425-497-0476  
Fax: 425-497-0496

York, PA  
**Apex Tool Group  
Sales & Service Center**  
3990 East Market Street  
York, PA 17402  
Tel: 717-755-2933  
Fax: 717-757-5063

Canada  
**Apex Tool Group  
Sales & Service Center**  
5925 McLaughlin Road  
Mississauga, Ont. L5R 1B8  
Canada  
Tel: 905-501-4785  
Fax: 905-501-4786

Germany  
Cooper Power Tools  
GmbH & Co. OHG  
a company of  
Apex Tool Group, LLC  
Industriestraße 1  
73463 Westhausen  
Germany  
Tel: +49 (0) 73 63 81 0  
Fax: +49 (0) 73 63 81 222

England  
Cooper Power Tools  
GmbH & Co. OHG  
a company of  
Apex Tool Group, LLC  
C/O Spline Gauges  
Piccadilly, Tamworth  
Staffordshire B78 2ER  
United Kingdom  
Tel: +44 1827 8741 28  
Fax: +44 1827 8741 28

France  
Cooper Power Tools SAS  
a company of  
Apex Tool Group, LLC  
25 rue Maurice Chevalier  
77330 Ozoir-La-Ferrière  
France  
Tel: +33 1 6443 2200  
Fax: +33 1 6443 1717

China  
Cooper (China) Co., Ltd.  
a company of  
Apex Tool Group, LLC  
955 Sheng Li Road,  
Heqing Pudong, Shanghai  
China 201201  
Tel: +86-21-28994176  
Fax: +86-21-51118446

Mexico  
Cooper Tools  
de México S.A. de C.V.  
a company of  
Apex Tool Group, LLC  
Vialidad El Pueblito #103  
Parque Industrial Querétaro  
Querétaro, QRO 76220  
Mexico  
Tel: +52 (442) 211-3800  
Fax: +52 (442) 103-0443

Brazil  
Cooper Tools Industrial Ltda.  
a company of  
Apex Tool Group, LLC  
Av. Liberdade, 4055  
Zona Industrial - Iporanga  
SP Brazil  
Tel: +55 15 2383929  
Fax: +55 15 2383260

Hungary  
Cooper Tools Hungaria Kft.  
a company of  
Apex Tool Group, LLC  
Berkenyefa sor 7  
Pf: 640  
9027 Győr  
Hungary  
Tel: +36 96 66 1383  
Fax: +36 96 66 1135

Apex Tool Group, LLC  
1000 Lufkin Road  
Apex, NC 27539  
Phone: 919-387-0099  
Fax: 919-387-2614  
www.apextoolgroup.com

# DOTCO®