

DOTCO[®]

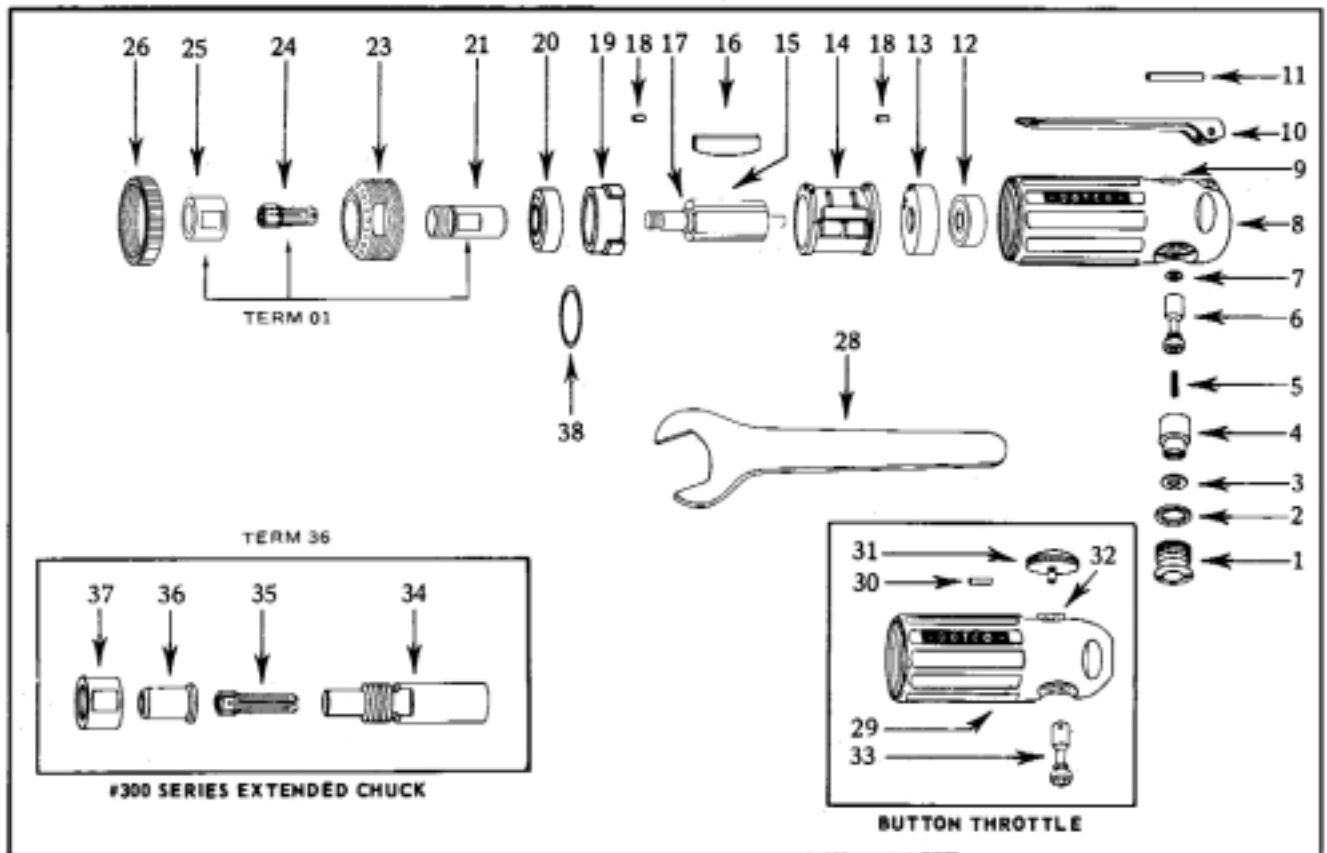
45-8010

**10S20.., 15S20..,10K20..,15K20
10B20.., 15B20.., 10L20.., & 15L20 Series
Heavy Duty Grinders**

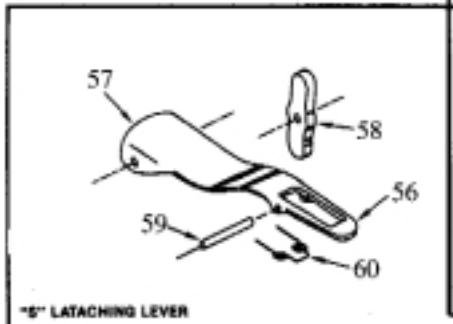
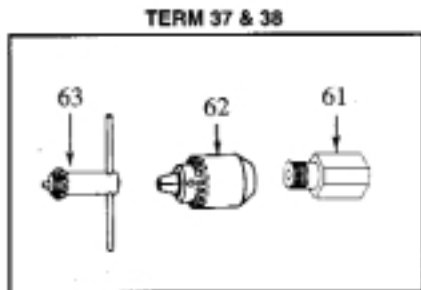
LATCHING LEVER THROTTLE	10S2000	10S2005	15S2000
LOCK-OFF LEVER THROTTLE	10K2000	10K2005	15K2000
BUTTON THROTTLE	10B2000	10B2005	15B2000
LEVER THROTTLE	10L2000	10L2005	15L2000
R.P.M.	25,000	20,000	25,000

For additional product information visit our website at <http://www.coopertools.com>

DOTCO
10-20 & 15-20 Series Heavy Duty Grinders



NOTE: ALL NUMBERS IN ABOVE DRAWING AND IN DISASSEMBLY AND ASSEMBLY INSTRUCTIONS ARE INDEX NUMBERS ONLY. REFER TO PARTS LIST FOR PART NUMBERS WHEN ORDERING.



DOTCO

10-20 & 15-20 Series Heavy Duty Grinders

PL30-1020
February, 2001

I N D E X	DESCRIPTION	PART NUMBER LISTED BELOW EACH MODEL						
		R.P.M.	25,000	25,000	20,000	20,000	25,000	25,000
		MODEL NO.	10L2000 10K2000 10S2000	10B2000	10L2005 10K2005 10S2005	10B2005	15L2000 15K2000 15S2000	15B2000
1	REGULATOR PLUG w/Index 2	2012	2012	2012	2012	2012	2012	
2	"O" RING	1057	1057	1057	1057	1057	2057	
3	"O" RING	1056	1056	1056	1056	1056	1056	
4	SPEED REGULATOR w/Index 3	2011	2011	2011	2011	2011	2011	
5	VALVE SPRING	2015	2015	2015	2015	2015	2015	
6	VALVE STEM w/Index 7	2008		2008		2008		
7	"O" RING	2053	2053	2053	2053	2053	2053	
8	MOTOR HOUSING w/INDEX 9	2001		2001		2001		
9	VALVE BUSHING ONLY*	2007		2007		2007		
10	LEVER	1019		1019		1019		
11	LEVER PIN	1042		1042		1042		
12	BALL BEARING	538	538	538	538	538	538	
13	REAR BEARING PLATE w/INDEX 18	7003	7003	7003	7003	7003	7003	
14	CYLINDER	2002	2002	2002	2002	2002	2002	
15	ROTOR w/INDEX 17	7005	7005	7005	7005	7005	7005	
16	ROTOR BLADE	2006 (4)	2006 (4)	2406 (4)	2406 (4)	2006(4)	2006(4)	
17	SPACER ONLY	2017	2017	2017	2017	2017	2017	
18	LOCATING PIN (2 Req'd.)	1041	1041	1041	1041	1041	1041	
19	FRONT BEARING PLATE w/INDEX 18	2256	2256	2256	2256	2256	2256	
20	BALL BEARING	500	500	500	500	500	500	
21	COLLET CHUCK BODY	2054	2054	2054	2054			
23	LOCK RING	2014	2014	7085 **	7085 **	2014	2014	
24	COLLET 1/4"	208	208	208	208			
25	COLLET CHUCK CAP	2058	2058	2058	2058			
26	GUARD	2585	2585	2585	2585	2585	2585	
28	WRENCH, WRENCH	14-0809 14-0812	14-0809 14-0812	14-0809 14-0812	14-0809 14-0812			
29	MOTOR HOUSING w/INDEX 32		2051		2051		2051	
30	BUTTON PIN		1055		1055		1055	
31	BUTTON		1039		1039		1039	
32	VALVE BUSHING ONLY*		2037		2037		2037	
33	VALVE STEM w/INDEX 7		2038		2038		2038	
34	COLLET CHUCK BODY	1400	1400	1400	1400			
35	COLLET 1/4"	308	308	308	308			
36	NOSEPIECE	1053	1053	1053	1053			
37	CAP	1058	1058	1058	1058			
38	SHIM PACKET	2488	2488	2488	2488	2488	2488	
41	VALVE STEM w/INDEX 7	2412		2412		2412		
42	BALL (2 Req'd)	4180		4180		4180		
43	SPRING	2015		2015		2015		
44	SPRING	2413		2413		2413		
45	PLUG ASSEMBLY	2411		2411		2411		
56	LEVER w/INDEX 57,58,59,60	01-1260		01-1260		01-1260		
57	LEVER	01-1237		01-1237		01-1237		
58	LOCK-OFF	01-1259		01-1259		01-1259		
59	PIN	01-1241		01-1241		01-1241		
60	SPRING	01-1240		01-1240		01-1240		

* If valve bushing is replaced, press bushing into top of motor housing with beveled end up. Ream or hone inside diameter of valve bushing to .3129 plus .0003 diameter.

** If Lock Ring 7085 is replaced, check speed of tool after assembly with a reliable tachometer. If speed is below rated R.P.M., check to make sure that tool spindle rotates freely, that speed regulator is fully open, that there is 90 p.s.i. air pressure at the tool inlet, and that the tool is adequately lubricated. If speed is still too slow, remove Lock Ring, enlarge the exhaust ports, one at a time, about .001 to .002. Repeat procedure until rated R.P.M. is obtained. CAUTION: Tool should never be operated over rated R.P.M.

DOTCO 10-20 & 15-20 Series Heavy Duty Grinders

APPLICATION	TERMINATION NO.	SIZE	INDEX NO.	DESCRIPTION	PART NO.	Use With The Following Models Only
MOUNTED WHEELS & CARBIDE BURRS	01	No. 200 SERIES CHUCK	13	BEARING PLATE w/INDEX 18	7003	10-2000 10-2005
			18	PIN	1041	
			19	BEARING PLATE w/INDEX 18	2256	
			15	ROTOR w/INDEX 17	7005	
			17	SPACER	2017	
			20	BEARING	500	
			12	BEARING	538	
			14	CYLINDER	2002	
			21	CHUCK BODY	2054	
			25	CAP	2058	
			24	COLLET	208	
			28	WRENCH 9/16"	14-0809	
			28	WRENCH 3/4"	14-0812	
MOUNTED WHEELS & CARBIDE BURRS	36	No. 300 SERIES CHUCK	13	BEARING PLATE w/INDEX 18	7003	10-2000 10-2005
			18	PIN	1041	
			19	BEARING PLATE w/INDEX 18	2256	
			15	ROTOR w/INDEX 17	7005	
			17	SPACER	2017	
			20	BEARING	500	
			12	BEARING	538	
			36	NOSEPIECE	1053	
			37	CAP	1058	
			34	CHUCK BODY	1400	
			14	CYLINDER	2002	
			35	COLLET	308	
			28	WRENCH 7/16"	14-0807	
28	WRENCH 11/16"	14-0811				
JACOBS CHUCK 5/32" MAX	37		61	ADAPTER	14-2190	15-2000
		62	CHUCK W/INDEX 63	1075		
		63	KEY	620		
JACOBS CHUCK 1/4" MAX	38		61	ADAPTER	14-2133	15-2000
		62	CHUCK W/INDEX 63	14-1485		
		63	KEY	621		

Below is a list of Collets, series 200 and 300 that can be used with the grinders covered by this instruction. Number 208 and 308, 1/4" Collets, are shown on parts list and are supplied as standard with grinder models as indicated on parts list.

COLLET SERIES		ARBOR SIZE	COLLET SERIES		ARBOR SIZE
300	200		300	200	
301		3/64" DIA.	307	207	7/32" DIA.
302		5/64" DIA.	308	208	1/4" DIA.
303		3/32" DIA.		209	9/32" DIA.
304	204	1/8" DIA.		210	5/16" DIA.
305	205	5/32" DIA.		211	11/32" DIA.
306	206	3/16" DIA.		212	3/8" DIA.
310	213	6mm		216	8mm